

KD-Validated Anti-Menin 1 Rabbit Monoclonal Antibody
Rabbit monoclonal antibody
Catalog # AGI1236**Specification**

KD-Validated Anti-Menin 1 Rabbit Monoclonal Antibody - Product Information

Application	WB, FC
Primary Accession	O00255
Reactivity	Rat, Human, Mouse
Clonality	Monoclonal
Isotype	Rabbit IgG
Calculated MW	Predicted, 68 kDa; observed, 68 kDa kDa
Gene Name	MEN1
Aliases	Menin 1; Menin; SCG2; Multiple Endocrine Neoplasia I; MEAI
Immunogen	A synthesized peptide derived from human Menin

KD-Validated Anti-Menin 1 Rabbit Monoclonal Antibody - Additional Information

Gene ID	4221
Other Names	
Menin, MEN1, SCG2	

KD-Validated Anti-Menin 1 Rabbit Monoclonal Antibody - Protein Information**Name** MEN1**Synonyms** SCG2**Function**

Essential component of a MLL/SET1 histone methyltransferase (HMT) complex, a complex that specifically methylates 'Lys-4' of histone H3 (H3K4). Functions as a transcriptional regulator. Binds to the TERT promoter and represses telomerase expression. Plays a role in TGFB1-mediated inhibition of cell-proliferation, possibly regulating SMAD3 transcriptional activity. Represses JUND-mediated transcriptional activation on AP1 sites, as well as that mediated by NFkB subunit RELA. Positively regulates HOXC8 and HOXC6 gene expression. May be involved in normal hematopoiesis through the activation of HOXA9 expression (By similarity). May be involved in DNA repair.

Cellular Location

Nucleus. Note=Concentrated in nuclear body-like structures. Relocates to the nuclear matrix upon gamma irradiation

Tissue Location

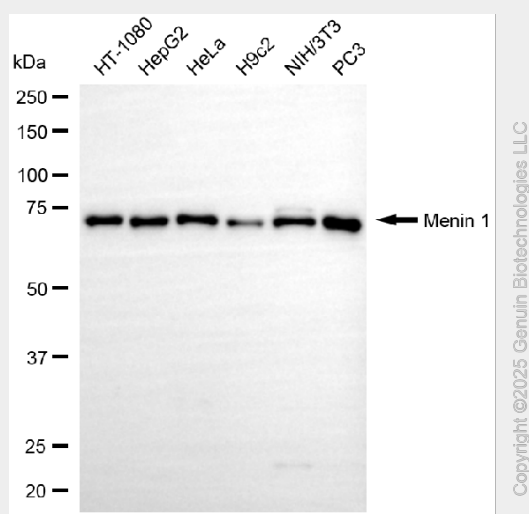
Ubiquitous.

KD-Validated Anti-Menin 1 Rabbit Monoclonal Antibody - Protocols

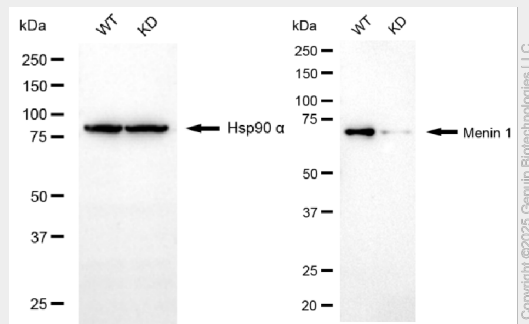
Provided below are standard protocols that you may find useful for product applications.

- [Western Blot](#)
- [Blocking Peptides](#)
- [Dot Blot](#)
- [Immunohistochemistry](#)
- [Immunofluorescence](#)
- [Immunoprecipitation](#)
- [Flow Cytometry](#)
- [Cell Culture](#)

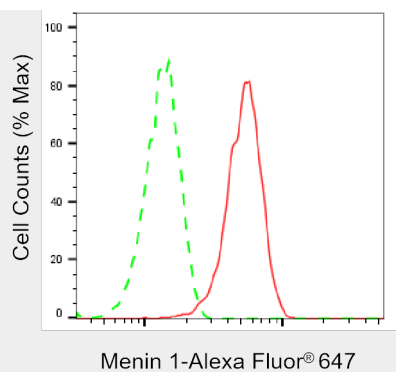
KD-Validated Anti-Menin 1 Rabbit Monoclonal Antibody - Images



Western blotting analysis using anti-menin 1 antibody (Cat#AGI1236). Total cell lysates (30 µg) from various cell lines were loaded and separated by SDS-PAGE. The blot was incubated with anti-menin 1 antibody (Cat#AGI1236, 1:5,000) and HRP-conjugated goat anti-rabbit secondary antibody respectively.



Western blotting analysis using anti-menin 1 antibody (Cat#AGI1236). Menin 1 expression in wild type (WT) and menin 1 (MEN1) knockdown (KD) HSHC cells with 20 µg of total cell lysates. Hsp90 α serves as a loading control. The blot was incubated with anti-menin 1 antibody (Cat#AGI1236, 1:5,000) and HRP-conjugated goat anti-rabbit secondary antibody respectively.



Flow cytometric analysis of Menin 1 expression in HepG2 cells using anti-Menin 1 antibody (Cat#AGI1236, 1:2,000). Green, isotype control; red, Menin 1.